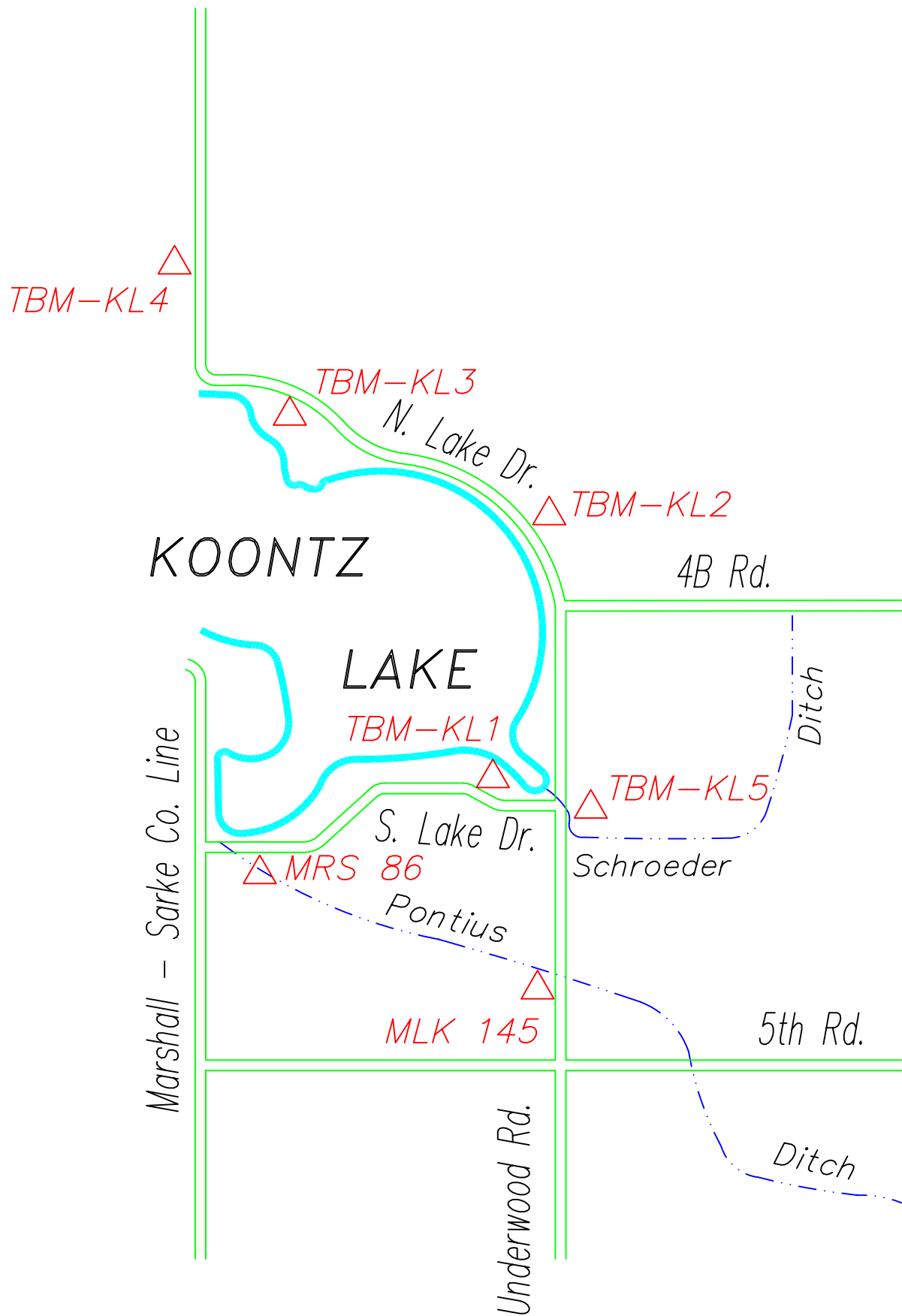


KOONTZ LAKE BENCHMARKS



TBM-KL1

RAILROAD SPIKE IN SOUTH SIDE OF UTILITY POLE # 784/709, APPROXIMATELY 0.15 MILE WEST ALONG SOUTH LAKE DRIVE FROM INTERSECTION WITH NORTH UNDERWOOD ROAD, 19 FEET NORTH OF CENTERLINE AND ACROSS FROM 20829 SOUTH LAKE DRIVE. **ELEV.: 725.96 NGVD 29**

TBM-KL2

RAILROAD SPIKE IN SOUTHWEST SIDE OF UTILITY POLE # 788/565, 0.1 MILE NORTH AND WEST ALONG NORTH LAKE DRIVE FROM INTERSECTION WITH 4B ROAD, 19 FEET NORTHEAST OF CENTERLINE AND ACROSS FROM 20757 NORTH LAKE DRIVE. **ELEV.: 731.21 NGVD 29**

TBM-KL3

RAILROAD SPIKE IN NORTHEAST SIDE OF UTILITY POLE # 289/697, APPROXIMATELY 0.1 MILE EAST ALONG NORTH LAKE DRIVE FROM MARSHALL-STARKE LAKE DRIVE CENTERLINE. **ELEV.: 729.46 NGVD 29**

TBM-KL4

RAILROAD SPIKE IN EAST SIDE OF UTILITY POLE # 786/286, APPROXIMATELY 0.15 MILE NORTH ALONG MARSHALL-STARKE COUNTY LINE ROAD, FROM A CURVE TO THE NORTH FROM NORTH LAKE DRIVE, (AN EAST WEST ROAD). 41 FEET WEST OF THE COUNTY LINE ROAD CENTERLINE, 16 FEET NORTH OF A PRIVATE DRIVE TO THE WEST. **ELEV.: 731.94 NGVD 29**

TBM-KL5

THE CENTER OF TWO FILED NOTCHES SET IN THE TOP OF THE EAST END OF THE NORTH UNDERWOOD ROAD CULVERT OVER AN UNNAMED TRIBUTARY TO KOONTZ LAKE 115 FEET NORTH ALONG SOUTH LAKE DRIVE FROM THE INTERSECTION WITH NORTH UNDERWOOD ROAD, 1.6 FEET BELOW THE ROADWAY. **ELEV.: 717.17 NGVD 29**

INDR BM MRS 86 1978

DNR BRASS CONTROL TABLET SET IN TOP OF CONCRETE POST, 240 FEET EAST ALONG SOUTH LAKE DRIVE FROM INTERSECTION WITH THE MARSHALL-STARKE COUNTY LINE, 19 FEET SOUTH FROM SOUTH LAKE DRIVE, 0.1 FEET ABOVE GROUND. **ELEV.: 722.331 NGVD 29**
ELEV.: 721.959 NAVD 88

INDR TBM MLK 145 1978

A CHISLED TRIANGLE SET IN TOP OF THE SOUTH END OF THE WEST CONCRETE BRIDGE GUARDRAIL, AT THE NORTH UNDERWOOD ROAD 18-FOOT CONCRETE BRIDGE OVER LAWRENCE PONTIUS DITCH, 11 FEET WEST FROM THE CENTERLINE OF THE ROAD, 2.6 FEET ABOVE THE ROADWAY, 0.1 FOOT NORTH FROM THE SOUTH END OF THE GUARDRAIL. **ELEV.: 726.791 NGVD 29**
ELEV.: 726.419 NAVD 88