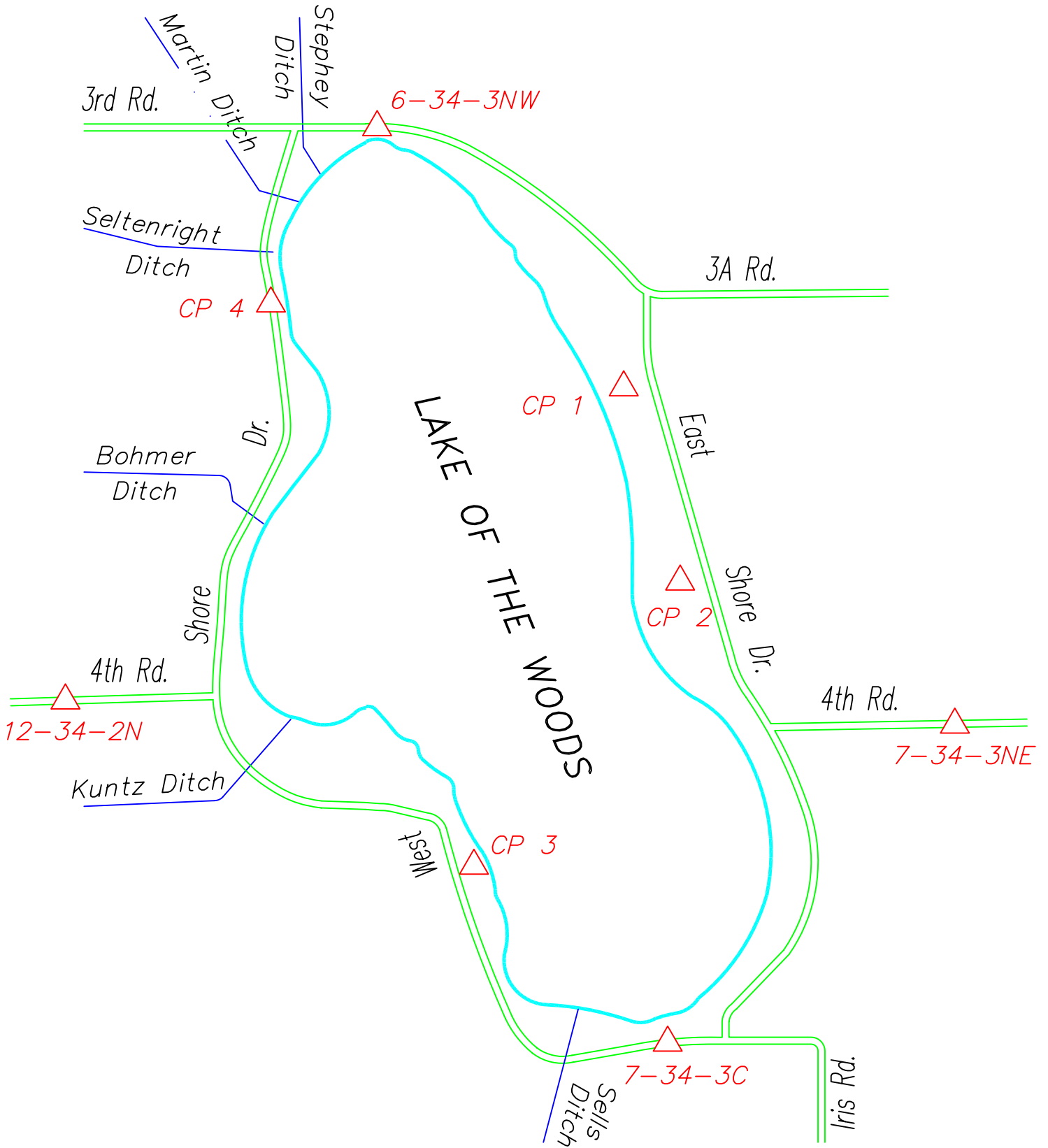


LAKE OF THE WOODS

CONTROL POINTS

HORIZONTAL DATUM:
NAD 83(1997)

VERTICAL DATUM:
NAVD 88



CONTROL POINT “CP 1”

APPROX. 0.1 MILE WEST ALONG ALABAMA STREET FROM INTERSECTION WITH EAST SHORE DRIVE, AT A CURVE TO THE NORTH, 6 FEET SOUTH OF THE PROJECTED CENTERLINE OF ALABAMA STREET, 8 FEET EAST OF THE PROJECTED CENTERLINE OF LAKE SHORE DRIVE, 1.8 FEET SOUTH OF THE EDGE OF PAVEMENT, AN ALUMINUM DISK STAMPED “CP 1”.

NORTHING: 2251995.9200 EASTING: 174757.8398 ELEVATION: 806.41
LATITUDE: 41 25 46.2907(N) LONGITUDE: 086 13 32.8412(W)

CONTROL POINT “CP 2”

AT THE INTERSECTION OF CHICAGO STREET AND EAST SHORE DRIVE, 21.5 FEET WEST OF THE CENTERLINE OF EAST SHORE DRIVE, 63.9 FEET SOUTHEASTERLY OF A ONE STORY BUILDING, AN ALUMINUM DISK STAMPED “CP 2”.

NORTHING: 2250141.8540 EASTING: 175751.8633 ELEVATION: 810.90
LATITUDE: 41 25 28.0362(N) LONGITUDE: 086 13 19.6362(W)

CONTROL POINT “CP 3”

AT THE PUBLIC ACCESS SITE, 292 FEET EAST OF THE CENTERLINE OF WEST SHORE DRIVE, 5.3 FEET SOUTH OF A FENCE, 0.8 FEET SOUTH OF A SURVEY MARKER WITNESS POST, AN ALUMINUM DISK STAMPED “CP 3”.

NORTHING: 2247513.1146 EASTING: 173849.3636 ELEVATION: 806.29
LATITUDE: 41 25 01.9436(N) LONGITUDE: 086 13 44.3849(W)

CONTROL POINT “CP 4”

0.3 MILE SOUTH ALONG WEST SHORE DRIVE FROM INTERSECTION WITH 3RD ROAD (NORTH SHORE DRIVE), 39.5 FEET SOUTHEASTERLY FROM UTILITY POLE #780/193, AN ALUMINUM DISK STAMPED “CP 4”.

NORTHING: 2252533.0529 EASTING: 172024.7208 ELEVATION: 805.91
LATITUDE: 41 25 51.4215(N) LONGITUDE: 086 14 08.7660(W)

NORTHEAST CORNER SEC. 7-T34N-R3E

0.3 MILE EAST ALONG 4TH ROAD FROM INTERSECTION WITH EAST SHORE DRIVE, A STANDARD COUNTY SECTION CORNER MONUMENT.

NORTHING: 2248824.8733 EASTING: 178011.0531 ELEVATION: 807.26
LATITUDE: 41 25 15.1668(N) LONGITUDE: 086 12 49.8722(W)

CENTER SECTION CORNER SEC. 7-T34N-R3E

APPROX. 500 FEET WEST ALONG WEST SHORE DRIVE FROM INTERSECTION WITH EAST SHORE DRIVE, A STANDARD COUNTY SECTION CORNER MONUMENT.

NORTHING: 2246092.3668 EASTING: 175409.7205 ELEVATION: 810.87
LATITUDE: 41 24 48.0065(N) LONGITUDE: 086 13 23.7857(W)

NORTH 1/4 CORNER SEC. 12-T34N-R2E

0.3 MILE WEST ALONG 4TH ROAD FROM INTERSECTION WITH WEST SHORE DRIVE, A STANDARD COUNTY SECTION CORNER MONUMENT.

NORTHING: 2249046.0101 EASTING: 170169.4033 ELEVATION: 810.70
LATITUDE: 41 25 16.8493(N) LONGITUDE: 086 14 32.8174(W)

NORTHWEST CORNER SEC. 6-T34N-R3E

0.1 MILE EAST ALONG NORTH SHORE DRIVE FROM INTERSECTION WITH WEST SHORE DRIVE, AT A CURVE TO THE SOUTHEAST, A STANDARD COUNTY SECTION CORNER MONUMENT.

NORTHING: 2254135.9590 EASTING: 172814.8362 ELEVATION: 814.64
LATITUDE: 41 26 07.3090(N) LONGITUDE: 086 13 58.5313(W)