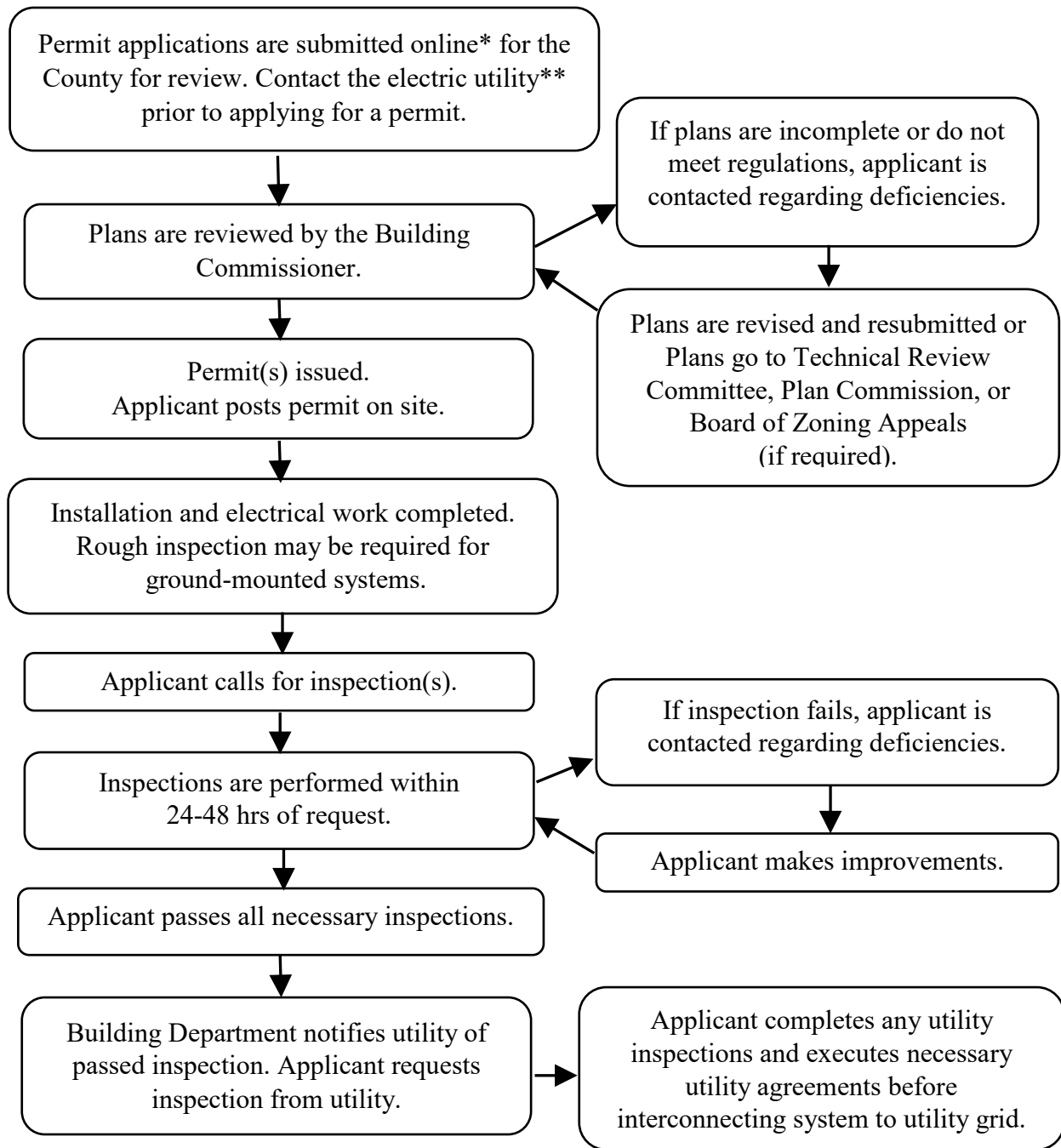


**Marshall County Permit Process for
Residential Grid-Tied* Solar Photovoltaic Systems (PV)**



* Access the online permitting system at <https://permits.schneidercorp.com/>

** Prior to submitting plans to the Building Department, the applicant should contact their electric utility to inquire about the process for applying for approval to interconnect to the grid. Utilities in Marshall County include: NIPSCO, Indiana Michigan Power, municipal utilities (Argos, Bremen, Etna Green), rural utilities Marshall County REMC, Kankakee Valley REMC, Fulton County REMC, and Kosciusko REMC.